



Marie Skłodowska-Curie Individual Fellowships

offer career development to young researchers by funding innovative academic research projects that include relevant, tailor-made training. Fellowships are awarded to the researcher to attend a host institution abroad for 12-24 months. Individual Fellowships follow a bottom-up approach, i.e. research fields are chosen freely by the applicants. To be successful, the application must be prepared by an experienced researcher with an excellent cv, an exceptional idea, and in collaboration with a prospective host institution. CRI-FEM provides support to individual experienced researchers who meet the [requirements of the H2020 Programme](#).



CRI-FEM is interested in hosting Marie Skłodowska-Curie Individual Fellows (IF) funded under Horizon 2020



For more information on how to apply please contact

Roberto Chincarini

Tel.: +39 0461 615 198

E-mail1: roberto.chincarini@fmach.it

E-mail2: funding@fmach.it



Fondazione Edmund Mach FEM Research and Innovation Centre

Over 2.000 m² research laboratories and technological platforms; more than 1500 m² of greenhouse space; 3000 m² for field experiments; 22 growth chambers; world class secondary school, graduate and post-graduate training.



<http://cri.fmach.it>

CRI-FEM: THE RIGHT ENVIRONMENT FOR RESEARCH

FEM Research and Innovation Centre (CRI) is a world class research institution with strong and expanding research interests. Moreover, CRI-FEM hosts a Research Unit on **Computational Biology**, EFi Project Centres “Mountfor” and FoxLab, and initiatives in **forest and wood research**. CRI-FEM is located in Trentino, at the foot of the Alps, one of the most spectacular and sought after locations in northern Italy.

The 240 CRI employees are young (mean age less than 40) and international (hailing from over 30 countries). CRI promotes an active environment for research, with state-of-art technologies, a strong network of international collaborations and over 60 PhD Students. Scientific output is good and growing (over 400 articles with IF in 2014 and 2015). FEM currently hosts various grant holders, including three Marie Skłodowska-Curie Individual Fellows. **Trentino also boasts a high standard of living, superb support for families, and numerous cultural and leisure opportunities.** If you thrive on an active life, Trentino is the right place to express your vitality. For families with children, FEM has agreements with local administrations for daycare, pre-school and elementary school services, as well as housing.

Our Welcome Office will be happy to support your logistical needs.



HOW TO APPLY

1.

IF YOU HAVE

- An innovative idea in the fields of agrifood, environment, biological sciences;
- A funding programme, with host-driven actions i.e.: **Marie Skłodowska-Curie actions Fellowships** you wish to apply for

2.

PLEASE CONTACT: funding@fmach.it

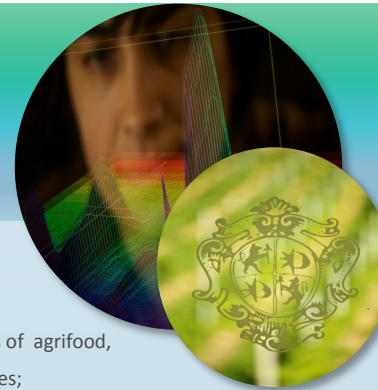
3.

CANDIDATES ARE REQUIRED to develop and submit a research proposal that interfaces their own research interests with the research goals pursued at CRI: crop biology and genomics, food quality and nutrition, sustainable agriculture, and biodiversity conservation and management

4.

ELIGIBILITY CRITERIA FOR MSCA IF

- You must possess a PhD by the deadline for the submission of proposals (14/09/2016)
- You must not have been resident or carried out your main research, or work or training activity in Italy for more than 12 months in the 3 years immediately prior to the call deadline
- All nationalities are accepted



SCIENTIFIC AREAS OF INTEREST

Molecular and Structural Biology and Biochemistry: molecular biology, biochemistry, biophysics, structural biology, biochemistry of signal transduction

Genetics, Genomics, Bioinformatics and Systems Biology: conservation genetics, population genetics, molecular genetics, genomics, metagenomics, transcriptomics, proteomics, metabolomics, bioinformatics, computational biology, biostatistics, biological modelling and simulation, systems biology, genetic epidemiology

Cellular and Developmental Biology: cell biology, cell physiology, signal transduction, organogenesis, developmental genetics, pattern formation in plants and animals

Evolutionary, population and environmental biology: evolution, ecology, animal behaviour, population biology, biodiversity, biogeography, eco-toxicology, prokaryotic biology, microbiology, freshwater ecology, stream ecology, speciation, parasitology, host-parasite interactions

Earth system science: physical geography, geology, geophysics, atmospheric sciences, oceanography, climatology, ecology, global environmental change, biogeochemical cycles, natural resources management, GIS, spatial and temporal modelling, climate change, remote sensing

Applied life sciences and biotechnology: agricultural, veterinary, wildlife, fishery, forestry and food sciences; biotechnology, chemical biology, genetic engineering, synthetic biology, industrial biosciences; environmental biotechnology and remediation, conservation, wildlife management, restoration ecology, biologging