

From microbial interactions to new-concept biopesticides and biofertilizers

**Mid-Term meeting, INTERFUTURE PhD day and
Winter PhD Courses on
'Tools for successful dissemination of results'
and 'Use of microbial signals to control plant
diseases'**

**February 10-16, 2019
San Michele all'Adige,
c/o Fondazione Edmund Mach**

**Marie Skłodowska-Curie Actions (MSCA)
Innovative Training Networks (ITN)
H2020-MSCA-ITN-2016
EID-722642-INTERFUTURE**

Program overview

Date	Activity	Start	End
Sunday February 10, 2019	Arrival		
Monday February 11, 2019	Tools for successful dissemination of results Session 1. Successful scientific communications and new generation tools	9.00	12.30
	Lunch	12.30	14.00
	Tools for successful dissemination of results Session 2. Practical exercises on successful dissemination (for INTEFUTURE members only)	14.00	18.30
	Free evening		
Tuesday February 12, 2019	Use of microbial signals to control plant diseases Session 1. Microbial and plant signals against phytopathogens	9.30	12.00
	Lunch	12.00	14.00
	Use of microbial signals to control plant diseases Lab experience 1. Microbial signals against phytopathogens	14.00	18.00
	Free evening		
Wednesday February 13, 2019	Use of microbial signals to control plant diseases Session 2. Novel and old players in microbe-microbe communications	9.00	12.30
	Lunch	12.30	14.00
	Use of microbial signals to control plant diseases Session 3. Communication systems within the microbiome and with the plant host	14.00	17.30
	Bi(tri)lateral meetings for ESRs	17.30	19.00
	Dinner [#]	20.00	21.30
Thursday February 14, 2019 (for INTEFUTURE members only)*	Mid-term meeting Session 1. Scientific and administrative aspects	9.00	12.30
	Lunch	12.50	14.00
	Mid-term meeting Session 2. Feedback and discussion	14.00	18.00
	Dinner [#]	19.30	21.00

Friday February 15, 2019 (for INTEFUTURE members only)*	Supervisory board	8.30	9.30
	General assembly	9.30	10.00
	INTERFUTURE PhD day Session 1. ESR4, ESR5, ESR7 and ESR8	10.00	12.30
	Lunch	12.30	13.00
	INTERFUTURE PhD day Session 2. ESR6, ESR9, ESR 10, ESR1, ESR2 and ESR11	14.00	18.00
	Bi(tri)lateral meetings for ESRs	18.00	19.00
	Dinner [#]	20.00	21.30
Saturday February 16, 2019	Use of microbial signals to control plant diseases Lab experience 2. Microbial signals against phytopathogens	9.00	13.00
	Departure		

All activities are compulsory for all ESRs. Supervisors are welcome.

*** Mid-Term meeting and INTERFUTURE PhD day are compulsory for all ESRs and supervisors (at least one for each ESR and partner).**

Attendance to sessions specified as 'for INTEFUTURE members only' is restricted to the project partners.

[#] Please book your dinner at: <https://doodle.com/poll/8t8m72ca9i8zpyqz>

Training on TOOLS FOR SUCCESSFUL DISSEMINATION OF RESULTS

Monday February 11, 2019

Room PRC 6302 – seminar room 3rd floor, building of Research

9.00	12.30	Training session 1.	
		Successful scientific communications and new generation tools	
9.00	10.30	The history of science in public: from practice to theory and back	Ilaria Ampollini
10.30	11.00	Break	
11.00	12.30	How to increase the impact on your research with social media: the case study of the E-STaR project	Anna Eriksson
12.30	14.00	Lunch	
14.00	18.30	Training session 2. (for INTEFUTURE members only)	
		Practical exercises on successful dissemination	
14.00	14.20	ESR1. Novel biofertilisers based on endophytic bacteria. Innovative approaches to bridge plant-microbe interaction research and bio-product development	Nikoletta Galambos
14.20.	14.40	ESR2. Untapping the keg of microbial bioproducts using innovative approaches	Maria F. Vasseur Coronado
14.40	15.00	ESR3. Interactions between crop genotypes and arbuscular mycorrhizal fungi	Mirjam Seeliger
15.00	15.20	ESR4. Characterization of the mode of action of innovative biocontrol products for plant defence	Abdessalem Chahed
15.20	15.40	ESR5. Characterization of the mechanism of action of sugar-based biocontrol products on target and non-target microorganisms	Nikola Mijailovic
15.40	16.00	Break	
16.00	16.20	ESR6. Employment of VOCs produced by <i>Lysobacter</i> members for the biological control of soilborne plant pathogenic fungi and oomycetes	Anthi Vlasi
16.20	16.40	ESR7. The interactions of the endophytic nitrogen fixing bacterium <i>Gluconacetobacter diazotrophicus</i> with fungal endophytes and rhizosphere micro-organisms associated with crop plants	Martina Franchini
16.40	17.00	ESR8. Plant and bacterial factors determining host colonization by intracellular uptake of <i>Gluconacetobacter diazotrophicus</i>	Michele Pallucchini
17.00	17.20	ESR9. Selection of microorganisms to develop new tools for the management of <i>Drosophila suzukii</i>	Amani Alawamleh
17.20	17.40	ESR10. Development of a commercial liquid food trap with addition of bioactive microorganisms to improve attractiveness and specificity for <i>Drosophila suzukii</i>	Gordana Durovic
17.40	18.00	ESR11. Conventional delivery strategies for bioproducts based on microbial bioproducts	Muhammad Aammam Tufail
18.00	18.30	Conclusions and discussion	
		Free evening	

In the training session 2 each ESR will have time for 10 min of presentation (according to the guidelines sent in advance) and 10 min of discussion.

Training on USE OF MICROBIAL SIGNALS TO CONTROL PLANT DISEASES

February 12,13,16, 2019

Room PRC 6302 – seminar room 3rd floor, building of Research

February 12, 2019		Use of microbial signals to control plant diseases	
9.30	12.00	Training session 1. Microbial and plant signals against phytopathogens	
9.30	10.30	The interaction between grapevine inflorescence and the fungus <i>Botrytis cinerea</i> as an example of host/pathogen system to analyse the reciprocal molecular communication	Claudio Moser
10.30	11.00	Break	
11.00	12.00	Silence, please! The bacteria are talking	Gerardo Puopolo
12.00	14.00	Lunch	
14.00	18.00	Lab experience 1. Microbial signals against phytopathogens	
14.00	18.00	Laboratory activities on the detection of microbial signals (Lab. Plant pathology and applied microbiology, Building of Phytopathology)	Gerardo Puopolo, Michele Perazzolli
		Free Evening	

February 13, 2019		Use of microbial signals to control plant diseases	
9.00	12:30	Training session 2. Novel and old players in microbe-microbe communications	
9.00	10.00	Below-ground chemical interactions	Paolina Garbeva
10.00	11.00	The development of a biopesticide against aboveground and belowground pathogens	Christine Vos
11.00	11.30	Break	
11.30	12.30	Decrypting the role of bacterial signals in microbial interactions to enhance the establishment of bacterial biocontrol agents in the rhizosphere	Ana Bejarano Ramos
12.30	14.00	Lunch	
14.00	18.00	Training session 3. Communication systems within the microbiome and with the plant host	
14.00	15.00	Interspecies signalling in plant associated bacteria	Vittorio Venturi
15.00	16.00	Engineering bacterial quorum sensing to modify plant-microbe interactions	Rupert Fray
16.00	16.30	Break	
16.30	17.30	Signals and mechanisms of plant-mycorrhiza recognition and interaction	Carolin Schneider
17.30	18.00	Round table and general discussion	
18.00	19.00	Bi(tri)lateral meetings for ESRs	
20.00	21.30	Dinner (Restaurant Da Pino, San Michele all'Adige) #	

February 14, 2019		Mid-term meeting (for INTEFUTURE members only)	
9.00	18.00	<i>detailed program in the following pages</i>	
19.30	21.00	Dinner (Restaurant Da Pino, San Michele all'Adige) #	

February 15, 2019		INTERFUTURE PhD DAY (for INTEFUTURE members only)	
8.30	19.00	<i>detailed program in the following pages</i>	
20.00	21.30	Dinner (Restaurant Da Pino, San Michele all'Adige) #	

February 16, 2019		Use of microbial signals to control plant diseases	
9.00	13.00	Lab experience 2. Microbial signals against phytopathogens	
9.00	11.00	Laboratory activities on the detection of microbial signals (Lab. Plant pathology and applied microbiology, Building of Phytopathology)	Gerardo Puopolo, Michele Perazzolli
11.30	12.00	Break	
12.00	13.00	General discussion and conclusions	
		Departure	

Attendance to sessions specified as 'for INTEFUTURE members only' is restricted to the project partners.

INTERFUTURE MID-TERM MEETING

Thursday February 14, 2019 (for INTEFUTURE members only)

Room PRC 6302 – seminar room 3rd floor, building of Research

09.00	9.15	Welcome and Introduction. Short introduction by the REA Project Officer, the External expert (Monitor) and the Project Coordinator.
09.15	9.45	Tour de table. Presentation by all Beneficiaries representatives describing their research team and their role within the network.
9.45	11.20	Coordinator's report. Presentation of the Network and the Mid-term report covering the scientific and training aspects reported here below
09.45	10.10	- Scientific aspects: <i>Scientific aspects: i) overview of the research project, ii) research objectives, iii) scientific highlights of the work so far and advancement</i>
10.10	10.30	- Training aspects: <i>i) overview of the training programme and progress, ii) short presentation of the training events already organized, iii) presentation of the ESR secondments</i>
10.30	11.00	Break
11.00	11.10	- Networking aspects: <i>i) how the beneficiaries cooperate in practice, ii) interaction with industrial sector, iii) dissemination and outreach activities</i>
11.10	11.20	- Management aspects: <i>i) recruitment report, ii) deliverables; iii) milestones, management meetings, iv) critical implementation risks and mitigation actions</i>
11.20	12.50	Fellows' individual reports. Power point presentations by ESR1, ESR2, ESR3, ESR4, ESR5, ESR6
12.50	14.00	Lunch
14.00	15.15	Fellows' individual reports. Power point presentations by ESR7, ESR8, ESR9, ESR10, and ESR11
15.15	15.45	Feedback and open discussion. Feedback from the REA Project Officer and the External Expert (Monitor) and discussion on the output of the Network so far
15.45	16.15	Break
16.15	17.30	Restricted session 1. Meeting between the ESRs and the REA representative
17.30	18.00	Restricted session 2. Meeting between the coordinator, Project Officer and the REA representative
18.00	18:30	Restricted session 3. Meeting between coordinator/partners/financial managers and Project Officer to discuss financial issues and periodic report
18:30		End of the meeting and farewell
19:30	21:00	Dinner (Restaurant Da Pino, San Michele all'Adige) #

Attendance to this session is restricted to the project partners.

INTERFUTURE PhD DAY

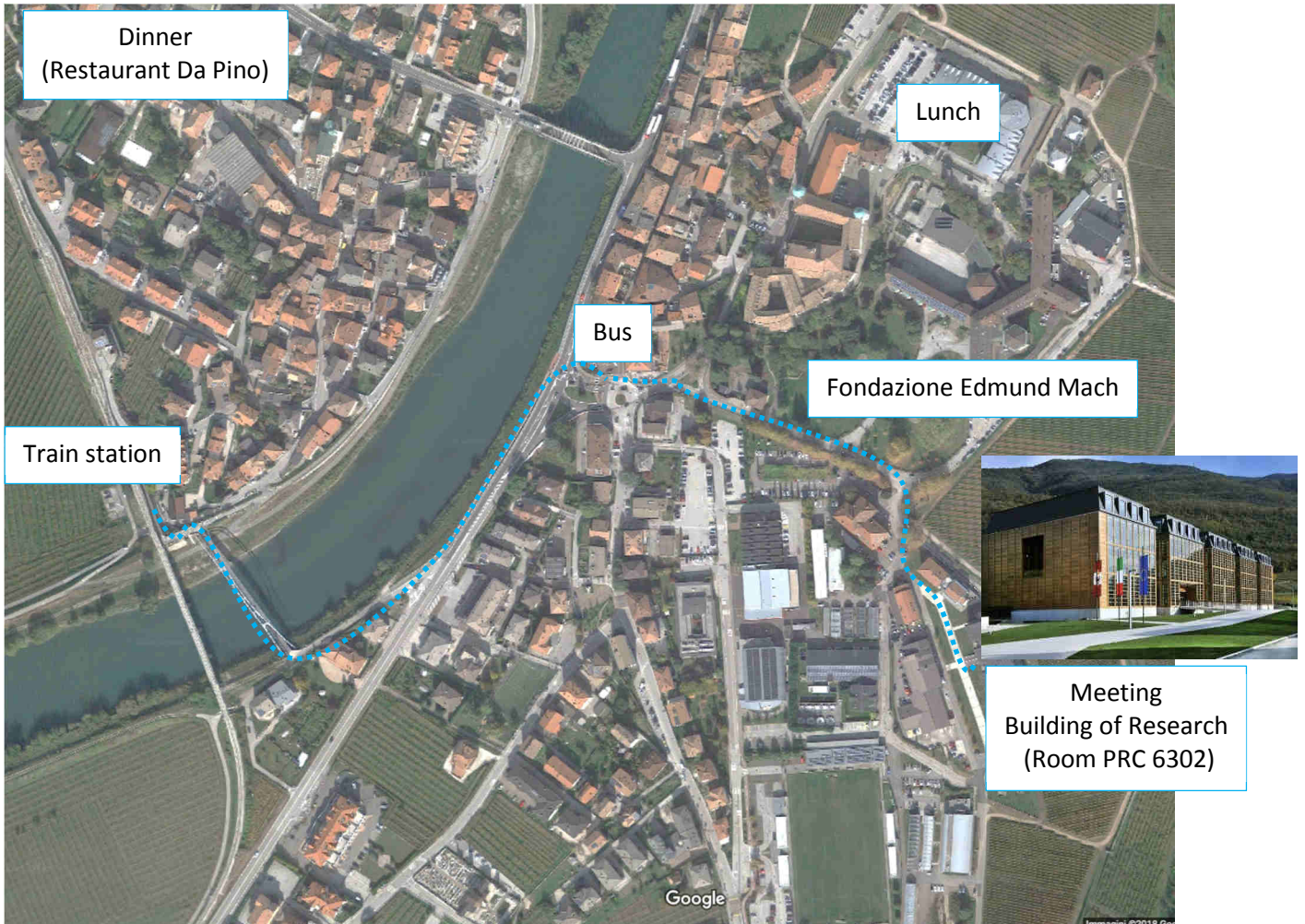
Friday February 15, 2019 (for INTEFUTURE members only)

Room PRC 6302 – seminar room 3rd floor, building of Research

8.30	9.30	Supervisory board	Ilaria Pertot
9.30	10.00	General assembly Presentation of new project partners and updated consortium, objectives, important deadlines and administrative aspects	Ilaria Pertot, Riccarda Moser, Michele Perazzoli
10.00	12.30	PhD Session 1 Interactions and mode of actions of biofertilizers and biofungicides	
10.00	10.30	ESR4. Characterization of the mode of action of innovative biocontrol products for plant defence	Abdessalem Chahed
10.30	11.00	ESR5. Characterization of the mechanism of action of sugar-based biocontrol products on target and non-target microorganisms	Nikola Mijailovic
11.00	11.30	Break	
11.30	12.00	ESR7. The interactions of the endophytic nitrogen fixing bacterium <i>Gluconacetobacter diazotrophicus</i> with fungal endophytes and rhizosphere micro-organisms associated with crop plants	Martina Franchini
12.00	12.30	ESR8. Plant and bacterial factors determining host colonization by intracellular uptake of <i>Gluconacetobacter diazotrophicus</i>	Michele Pallucchini
12.30	14.00	Lunch	
14.00	15.30	Meeting Session 2 Volatile organic compounds as novel eco-friendly pesticides	
14.00	14.30	ESR6. Employment of VOCs produced by <i>Lysobacter</i> members for the biological control of soilborne plant pathogenic fungi and oomycetes	Anthi Vlasi
14.30	15.00	ESR9. Selection of microorganisms to develop new tools for the management of <i>Drosophila suzukii</i>	Amani Alawamleh
15.00	15.30	ESR10. Development of a commercial liquid food trap with addition of bioactive microorganisms to improve attractiveness and specificity for <i>Drosophila suzukii</i>	Gordana Durovic
15.30	16.00	Break	
16.00	18.00	Meeting Session 3 Plant growth promoting microorganisms for a more sustainable agriculture	
16.00	16.30	ESR1. Novel biofertilisers based on endophytic bacteria. Innovative approaches to bridge plant-microbe interaction research and bio-product development	Nikoletta Galambos
16.30	17.00	ESR2. Untapping the keg of microbial bioproducts using innovative approaches	Maria F. Vasseur Coronado
17.00	17.30	ESR3. Interactions between crop genotypes and arbuscular mycorrhizal fungi	Mirjam Seeliger
17.30	18.00	ESR11. Conventional delivery strategies for bioproducts based on microbial bioproducts	Muhammad Aammar Tufail
18.00	19.00	Bi(tri)lateral meetings for ESRs	
20.00	21.30	Dinner (Restaurant Da Pino, San Michele all'Adige) [#]	

Attendance to this session is restricted to the project partners.

Fondazione Edmund Mach
Via Edmondo Mach 1
38010- San Michele all'Adige (Trento)



Connections from Trento:

Train: <http://www.ttesercizio.it/Treno/>

Bus: <http://www.ttesercizio.it/OrariDiLinea/OrariDiDirettrice-E18I-104A.PDF>

Book your **dinner** at: <https://doodle.com/poll/8t8m72ca9i8zpyqz>

Contacts:

Michele Perazzoli
michele.perazzoli@fmach.it
+39 0461 614 411

Gianfranco Anfora
gianfranco.anfora@fmach.it
+39 0461 615143

Ilaria Pertot
ilaria.pertot@fmach.it
+39 0461 614 515

Gerardo Puopolo
gerardo.puopolo@fmach.it
+39 0461 614 502

Riccarda Moser
riccarda.moser@fmach.it
+39 0461 614 812

HOTELS

San Michele all'Adige:

Hotel La Vigna

https://www.booking.com/hotel/it/garni-la-vigna.en-gb.html?aid=375647;label=msn-C0Uy_4TTiwYV_4nktXPsw-80607971641557%3Atikwd-80607997853048%3Aloc-93%3Aanes%3Aamte%3Aadec%3Aqsbooking;sid=36f57012ceac829385dec303eda76f61;all_sr_blocks=37221204_88459228_1_2_0;checkin=2019-02-10;checkout=2019-02-16;dest_id=-127979;dest_type=city;dist=0;group_adults=1;group_children=0;hapos=1;highlighted_blocks=37221204_88459228_1_2_0;hpos=1;no_rooms=1;room1=A;sb_price_type=total;srepreh=1542355743;srfid=2dcab958530ff10bffc6a160cd38178d6493c684X1;srpvid=2eef394f08e403c6;type=total;ucfs=1&#hotelTmpl

Hotel Cantaleone

https://www.booking.com/hotel/it/cantaleone-san-michele-all-adige.en-gb.html?aid=375647;label=msn-C0Uy_4TTiwYV_4nktXPsw-80607971641557%3Atikwd-80607997853048%3Aloc-93%3Aanes%3Aamte%3Aadec%3Aqsbooking;sid=36f57012ceac829385dec303eda76f61;checkin=2019-02-10;checkout=2019-02-16;dest_id=-127979;dest_type=city;dist=0;group_adults=1;group_children=0;hapos=1;hpos=1;no_rooms=1;room1=A;sb_price_type=total;soh=1;soldout=0%2C0;srepreh=1542345529;srfid=36e11d1367357543b2197d82669b2149c141fc41X1;srpvid=d5f8255ba6dd008d;type=total;ucfs=1&#no_availability_msg

Mezzocorona (6 Km from San Michele)

Hotel Centrale

https://www.booking.com/hotel/it/albergo-caffe-centrale.en-gb.html?aid=375647;label=msn-C0Uy_4TTiwYV_4nktXPsw-80607971641557%3Atikwd-80607997853048%3Aloc-93%3Aanes%3Aamte%3Aadec%3Aqsbooking;sid=36f57012ceac829385dec303eda76f61;all_sr_blocks=59203105_104119712_1_41_0;checkin=2019-02-10;checkout=2019-02-16;dest_id=-121667;dest_type=city;dist=0;group_adults=1;group_children=0;hapos=1;highlighted_blocks=59203105_104119712_1_41_0;hpos=1;no_rooms=1;room1=A;sb_price_type=total;srepreh=1542345560;srfid=773774bba7ac5bc06efee4e10e68df90a85d044X1;srpvid=750a256b71dd043a;type=total;ucfs=1&#hotelTmpl

Trento (25 Km from San Michele)

Hotel America

https://www.booking.com/hotel/it/america-trento.en-gb.html?aid=375647;label=msn-C0Uy_4TTiwYV_4nktXPsw-80607971641557%3Atikwd-80607997853048%3Aloc-93%3Aanes%3Aamte%3Aadec%3Aqsbooking;sid=36f57012ceac829385dec303eda76f61;all_sr_blocks=27909901_105477952_0_1_0;checkin=2019-02-10;checkout=2019-02-16;dest_id=-131282;dest_type=city;dist=0;group_adults=1;group_children=0;hapos=1;highlighted_blocks=27909901_105477952_0_1_0;hpos=1;no_rooms=1;room1=A;sb_price_type=total;srepreh=1542345735;srfid=63450558e80c6e5118d52ce831f6492871fad96X1;srpvid=dc2725c29a1f00c9;type=total;ucfs=1&#hotelTmpl

Grand Hotel Trento

https://www.booking.com/hotel/it/boscolotrento.en-gb.html?aid=375647;label=msn-C0Uy_4TTiwYV_4nktXPsw-80607971641557%3Atikwd-80607997853048%3Aloc-93%3Aanes%3Aamte%3Aadec%3Aqsbooking;sid=36f57012ceac829385dec303eda76f61;all_sr_blocks=22069008_88162439_0_1_0;checkin=2019-02-10;checkout=2019-02-16;dest_id=-131282;dest_type=city;dist=0;group_adults=1;group_children=0;hapos=1;highlighted_blocks=22069008_88162439_0_1_0;hpos=1;no_rooms=1;room1=A;sb_price_type=total;srepreh=1542345749;srfid=c740505a78f808bede0922c4bec06a374bac62aaX1;srpvid=b56225c936810125;type=total;ucfs=1&#hotelTmpl

and many others

https://www.booking.com/searchresults.en-gb.html?aid=375647&label=msn-C0Uy_4TTiwYV_4nktXPsw-80607971641557%3Atikwd-80607997853048%3Aloc-93%3Aanes%3Aamte%3Aadec%3Aqsbooking&sid=36f57012ceac829385dec303eda76f61&dest_id=-131282&dest_type=city&highlighted_hotels=220690&redirected=1&search_selected=0&srpvid=b56225c9ebfd0205&track_hp_back_button=1#hotel_220690-back